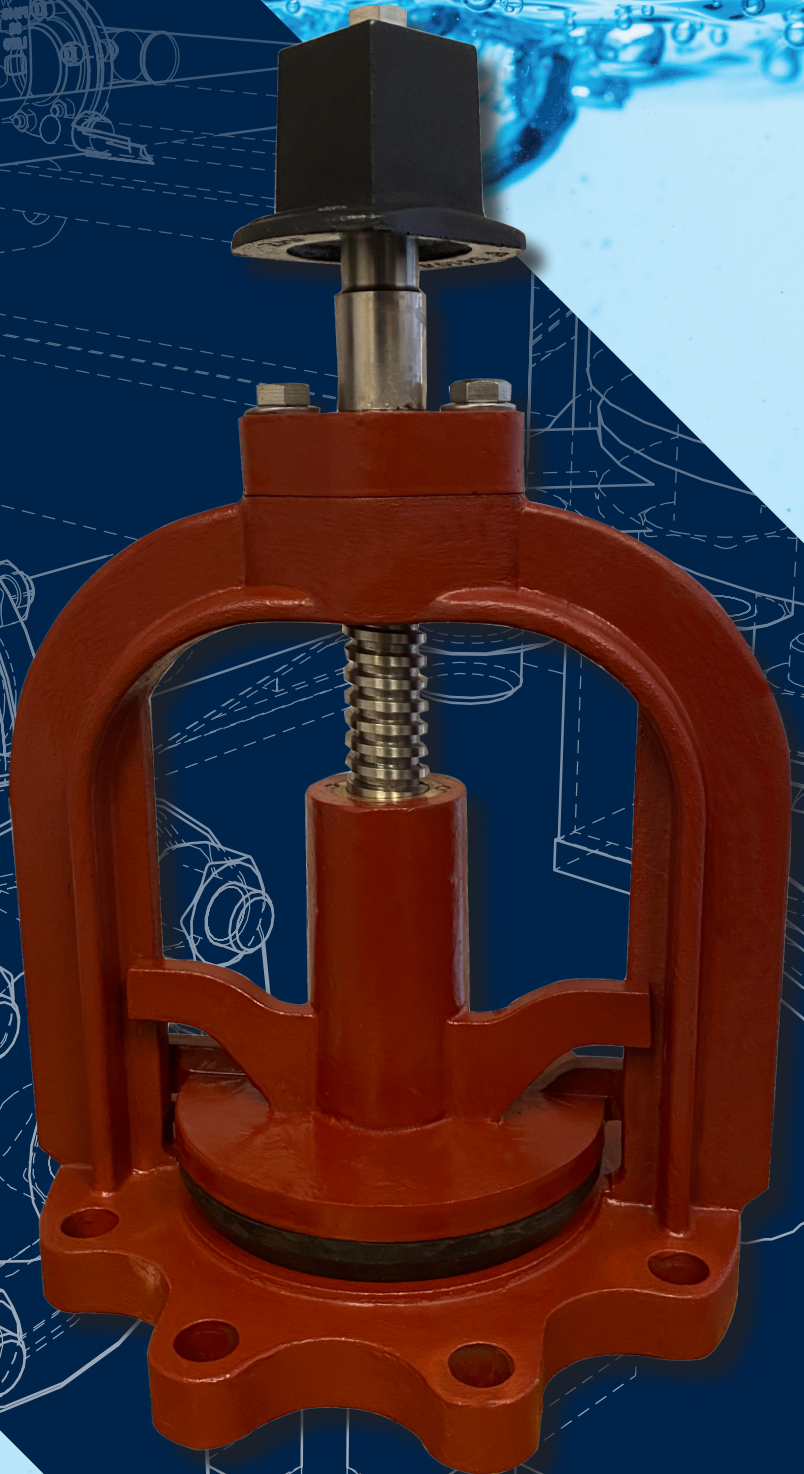


MUD VALVES

3"-12" NRS DUCTILE IRON
& STAINLESS STEEL

mcwanepi.com



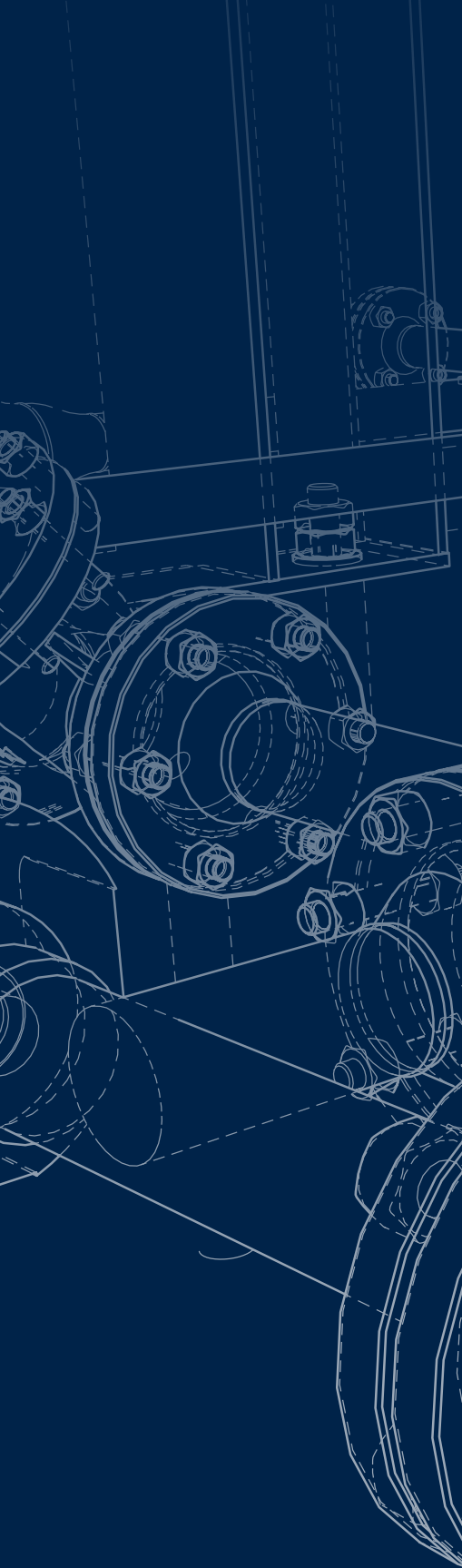


TABLE OF CONTENTS

▲ ABOUT MPI	2
▲ MUD VALVE	3
▲ SUGGESTED SPECIFICATIONS	4
▲ GENERAL ASSEMBLY DRAWINGS	5
▲ LINE CARD	6



THE INTEGRATED SOLUTION FOR TREATMENT PLANT NEEDS

Combining expertise from eight key water infrastructure brands in the McWane family of companies, McWane Plant & Industrial (MPI) provides a singular access point for the essential products and service required for any water or wastewater plant project.

WHY MPI?

We're a new kind of company formed on the basis of three simple goals:

- To provide a primary source for best-in-class products from time-tested brands
- Offer veteran specialists as resources for any plant project of any scale
- Increase the ease and efficiency of the planning and completion of our clients' projects

Our dedicated team is comprised of dozens of treatment plant specialists with decades of experience. We work cooperatively with industry

partners to give each project the attention it deserves, providing unprecedented levels of communication, access and collaboration. Our support teams work within dedicated service regions allowing our experts to apply regionally specific knowledge, including state regulations, codes and environmental specifications. Our nationally certified Associate Design-Build Professionals are a valuable asset to Design-Build projects.

The extended manufacturing capabilities of MPI mean your precise requirements are closer in reach and delivered faster with less legwork from you. We offer products that conform to rigorous industry standards and can work with your team to customize and fulfill unique requests. As part of our commitment to American workers and industries, we're proud of our ability to provide products from domestic facilities and to meet all domestic funding requirements.

MPI – best in-class

MUD VALVE



PRODUCT OVERVIEW

MPI's NRS style ductile iron/stainless steel mud valves are designed primarily for use in settling tanks of water and wastewater treatment plants. They are available in both ductile iron and stainless steel bodies. Their intended use is to drain tanks for maintenance or cleaning. Mud Valves are furnished with a 2" square operating nut; however, they can be supplied with optional extension stem or handwheel.

The valve uses a Buna-N resilient seat on the plug. The ductile iron/stainless steel body assembly features ASTM A276 stainless steel stems and fasteners to prevent corrosion from years of submerged service.

KEY CHARACTERISTICS	
Size Range	3"-12"
Materials	Ductile iron or stainless steel body, plug and stem cap; Buna-N gasket and stainless steel hardware;
Temperature Range	33°F-125°F
Body Style	ANSI CL 125-lb. flange



MUD VALVE

SUGGESTED SPECIFICATIONS

GENERAL

The Mud Valve shall be of the heavy-duty flanged type designed to provide a positive seal. The valves shall be non-rising stem style with a single piece frame. The frame, plug, and stem cap shall be ductile iron ASTM A536 70-50-5, or stainless steel ASTM A276. The valve operating stem shall be stainless steel ASTM A276.

VALVE FRAME

The valve frame shall be single piece construction.

VALVE STEM

The valve stem shall be machined stainless steel material A276.

VALVE PLUG

The plug seat shall be a seamless molded, tapered resilient ring of BUNA-N, designed to accurately mate with the seat ring for a positive seal.

VALVE GASKET

The mud valve gasket shall be Buna-N ASTM D2000.

VALVE OPERATION

The mud valve shall be operated by a 2" square operating nut and open by turning left.

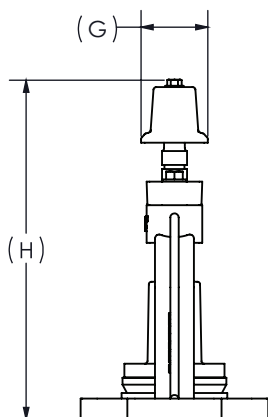
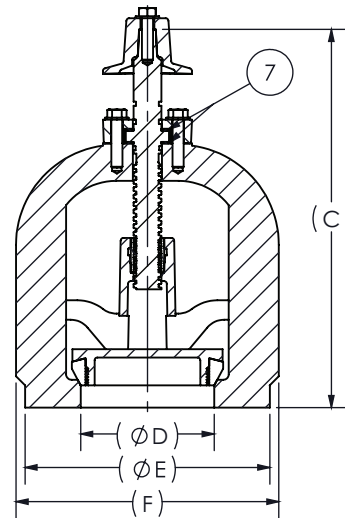
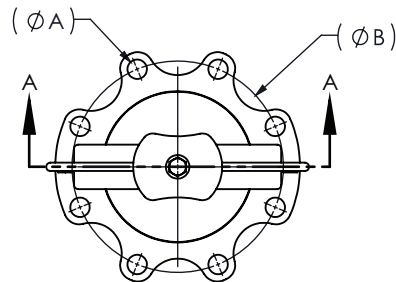
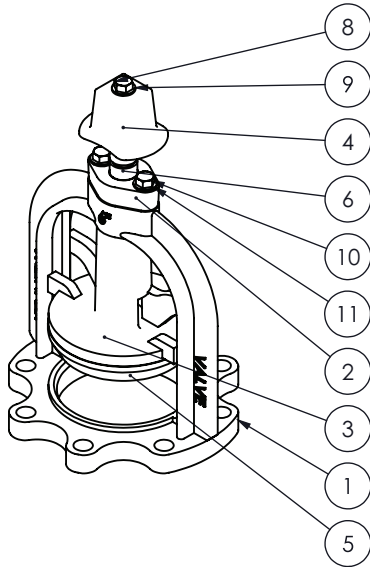
VALVE HARDWARE

The mud valve hardware shall be stainless steel ASTM A276.

MUD VALVE ASSEMBLY NRS STYLE DUCTILE IRON/STAINLESS STEEL SIZES 3"-12"

MPIK-6036-1

ITEM NO.	QTY.	DESCRIPTION	MATERIAL	ASTM
1	1	FRAME	DUCTILE IRON/STAINLESS STEEL	A536 70-50-5/A276
2	1	STEM CAP	DUCTILE IRON/STAINLESS STEEL	A536 70-50-5/A276
3	1	PLUG	DUCTILE IRON/STAINLESS STEEL	A536 70-50-5/A276
4	1	STEM OP NUT	DUCTILE IRON	A536 70-50-5
5	1	MJ GASKET	BUNA-N	D2000
6	1	STEM	STAINLESS STEEL	A276
7	2	THRUST BEARING	DELRIN/CELCON/ACETAL	D6778/D6100
8	1	BOLT	STAINLESS STEEL	A276
9	1	WASHER	STAINLESS STEEL	A276
10	2	BOLT	STAINLESS STEEL	A276
11	2	WASHER	STAINLESS STEEL	A276



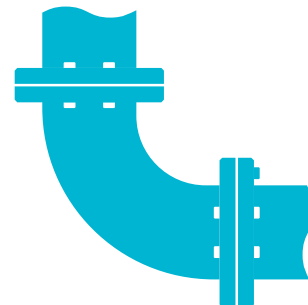
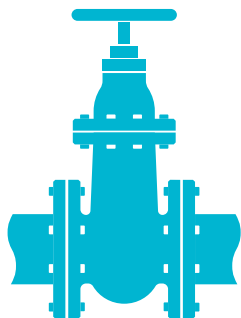
Mud Valve Size	Unit Weight (lbs)	
	DI material	SS material
4"	29	32
6"	42	46
8"	59	63
10"	96	102
12"	131	137

	3"	4"	6"	8"	10"	12"
A	3/4" - 4x	3/4" - 8x	7/8" - 8x	7/8" - 8x	1"-12x	1"-12x
B	6.50	7.50	9.50	11.75	14.25	17.00
C	14.31	14.31	17.00	19.31	22.81	24.69
D	4.00	4.00	6.00	8.00	10.00	12.00
E	9.00	9.00	11.00	13.25	16.00	18.75
F	9.31	9.31	11.81	13.63	16.50	19.25
G	3.00	3.00	3.00	3.00	3.00	3.00
H	15.27	15.27	15.24	20.23	23.90	25.78



MPI PRODUCT LINE

VALVES • GATES • PIPE & FITTINGS



VALVES

SOLUTIONS:

- Rotating Disc Gate Valves (AWWA C500)
- Eccentric Plug Valves (AWWA C517)
- Butterfly Valves (AWWA C504)
- High Performance Butterfly Valves (API 609)
- Swing Check Valve (AWWA C508)
- Ken-Flex Resilient Hinged Check Valve
- Telescoping Valve
- Resilient Seat Gate Valve (AWWA C509/C515)
- Pressure Relief Valves (Floor & Wall)
- Mud Valves
- Shear Gate Valves
- Solid Wedge Gate Valve

GATES

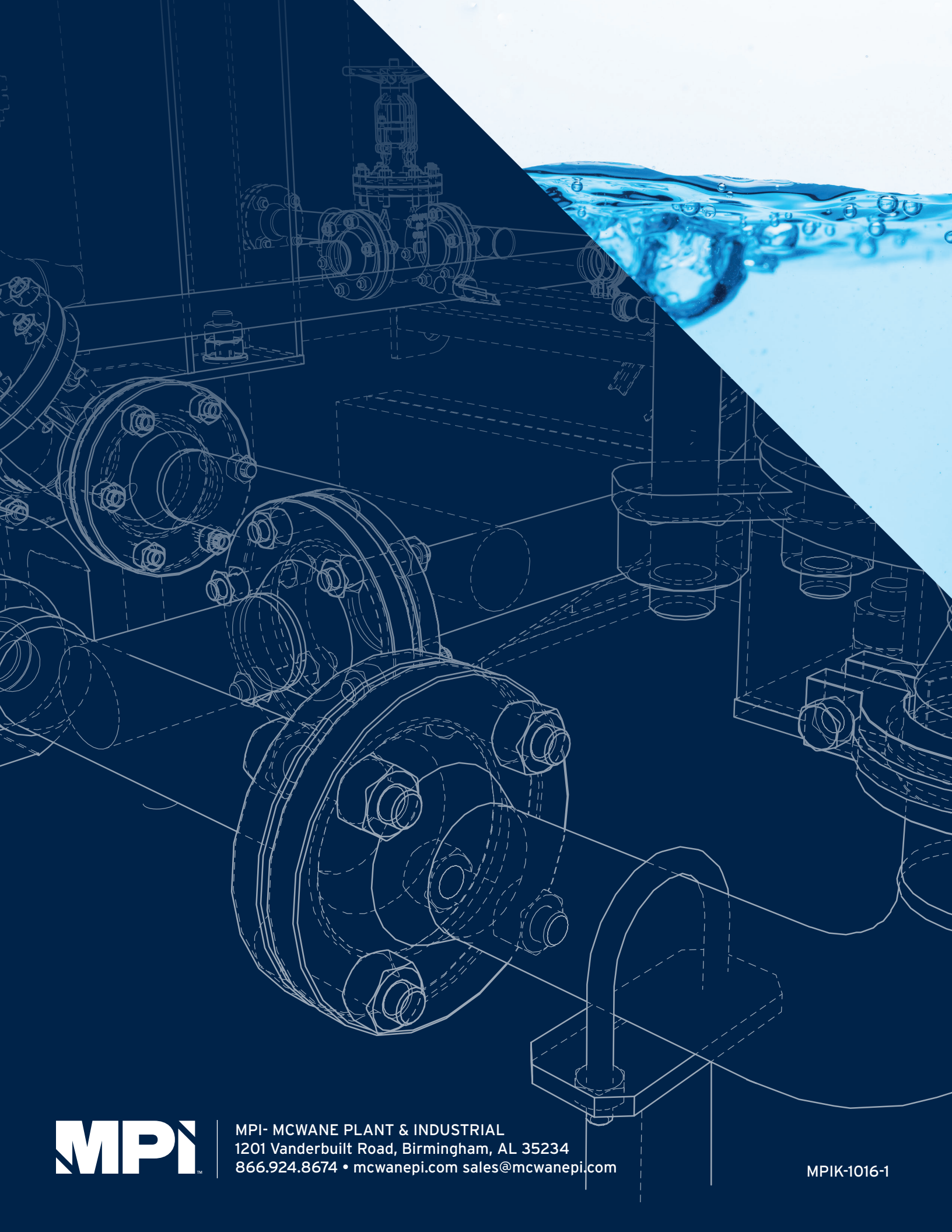
SOLUTIONS:

- Fabricated Stainless Steel Gates
- Fabricated Aluminum Gates
- Stop Logs & Stop Gates
- Cast Iron Slide (Sluice) Gates
- Rectangular Butterfly Gates
- Automatic Level Control Gates
- Flap Gates

PIPE & FITTINGS

SOLUTIONS:

- Fabricated Flange and Wall Pipe
- Ductile Iron Pipe
- Grooved Pipe & Fittings
- Pipe Linings: cement, glass, Protecto 401™
- Welded Outlets, Thread-O-Lets, Welded Boss
- Restrained Joint Fittings
- Seismic Solutions



MPI- MCWANE PLANT & INDUSTRIAL
1201 Vanderbilt Road, Birmingham, AL 35234
866.924.8674 • mcwanepi.com sales@mcwanepi.com

MPIK-1016-1